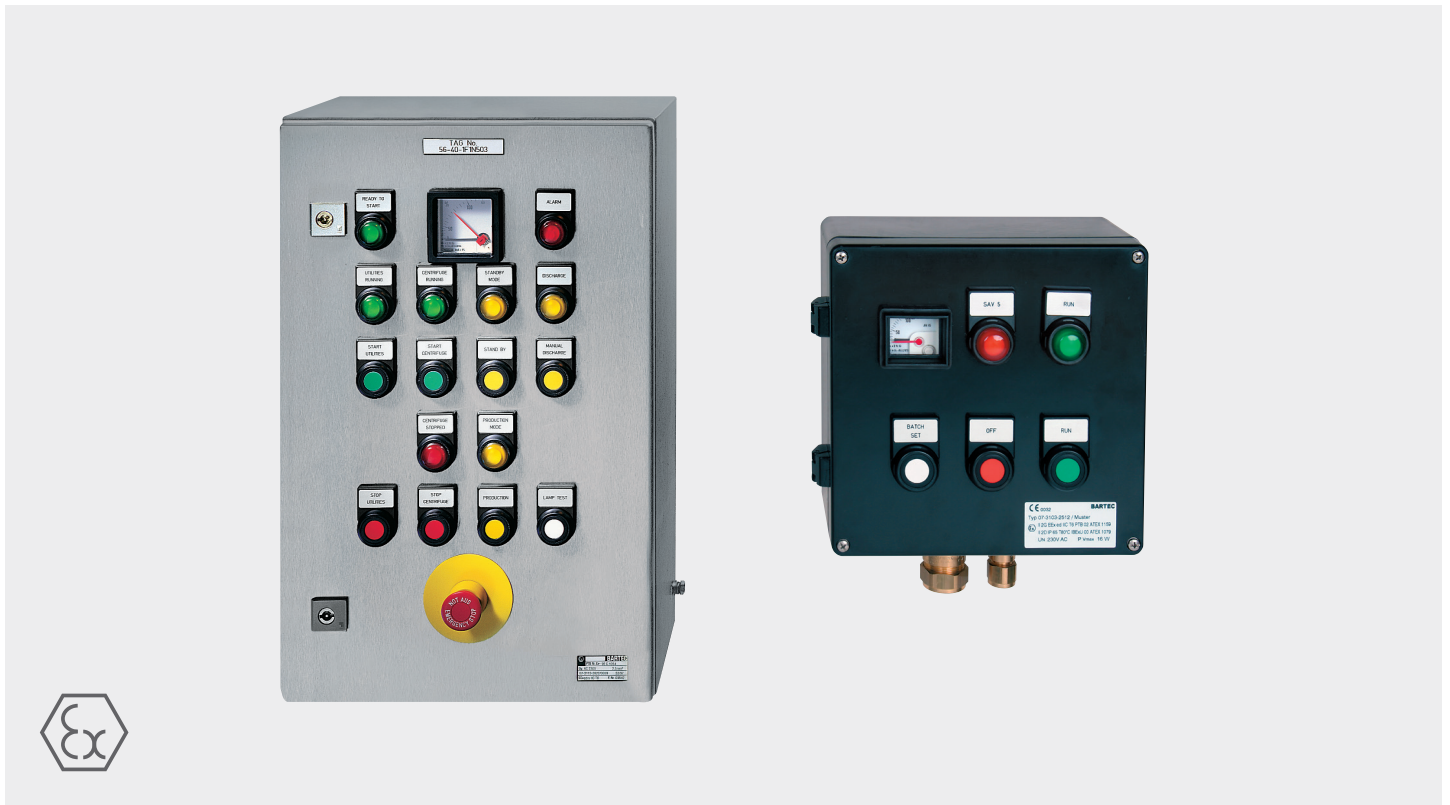


# Local control station

for Zone 2 and Zone 22



## Description

BARTEC produces local control stations for use in areas with flammable gases and dusts. Depending on the application area, the control stations are designed with the type of protection “Increased safety” or “Protection by enclosure”.

The explosion-protected local control stations are available in aluminium, polyester or stainless steel. When selecting the version, you can choose between a cabinet with door and an enclosure with screw cover.

Control, signalling and display devices and remote I/O systems are installed according to customer specifications. The installation of industrial standard equipment in controls for Zone 22, type of protection t “Protection by enclosure” is possible.

## Features

- The right size/material enclosure
- Optimum functionality thanks to the great variety of components
- Customised planning and implementation
- Certified to many standards



The control elements can also be mounted on a mounting rail or in the front wall. Free installation areas can be designated for the subsequent installation of BARTEC control and signalling devices, which are then sealed using blanking plugs.

All explosion-protected local control stations are supplied prewired on terminals.

**Fields of application**

Chemical and petrochemical industry, process and plant engineering, pharmaceutical and food industry, OFF SHORE areas.

**Explosion protection**

<b>Maximum marking</b>	Dependent on installed components. Please pay attention to the information on the marking plate.
------------------------	--

**Marking ATEX**

**Type A7-31\*\*-\* /\*\*\*\***

- ⊕ II 3 G Ex db dc eb ec ia ib ic [ic] nR nC ma mb mc [pxb] [pyb] [pzc] op is [op is] op pr q 60079-30-1 [60079-30-1] IIA, IIB or IIC T6, T5, T4 or T3 Gc X
- ⊕ II 3(2) G Ex db dc eb ec ia ib ic [ib Gb] ma mb mc nR nC op is [op is] op pr [pxb] [pyb] q 60079-30-1 [60079-30-1] IIA, IIB, IIC T6, T5, T4 or T3 Gc X
- ⊕ II 3(1) G Ex db dc eb ec ia ib ic [ia Ga] ma mb mc nR nC op is [op is Ga] op pr q 60079-30-1 IIA, IIB, IIC T6, T5, T4 or T3 Gc X
- ⊕ II 3 D Ex tb tc ia ib ic [ic] ma mb mc op is [op is] op pr [pxb] [pyb] [pzc] IIIA, IIB or IIC, T80 °C, T100 °C or T130 °C Dc X
- ⊕ II 3(2) D Ex tb tc ia ib ic [ib Gb] ma mb mc op is [op is] op pr [pxb] [pyb] IIIA, IIB or IIC, T80 °C, T100 °C or T130 °C Dc X
- ⊕ II 3(1) D Ex tb tc ia ib ic [ia Ga] ma mb mc op is [op is] op pr IIIA, IIB or IIC, T80 °C, T100 °C or T130 °C Dc X

**Type A7 -3S\*\*-\* /\*\*\*\***

- ⊕ II 3 D Ex tb tc ia ib ic [ic] ma mb mc op is [op is] op pr [pxb] [pyb] [pzc] IIIA, IIB or IIC, T80 °C, T100 °C or T130 °C Dc X
- ⊕ II 3(2) D Ex tb tc ia ib ic [ib Gb] ma mb mc op is [op is] op pr [pxb] [pyb] IIIA, IIB or IIC, T80 °C, T100 °C or T130 °C Dc X
- ⊕ II 3(1) D Ex tb tc ia ib ic [ia Ga] ma mb mc op is [op is] op pr IIIA, IIB or IIC, T80 °C, T100 °C or T130 °C Dc X

**Type A7 -3n\*\*-\* /\*\*\*\***

- ⊕ II 3 G Ex ec nR [ic] [op is] IIA, IIB or IIC T6, T5, T4 or T3 Gc
- ⊕ II 3(2) G Ex ec nR [ib Gb] [op is] IIA, IIB or IIC T6, T5, T4 or T3 Gc
- ⊕ II 3(1) G Ex ec nR [ia Ga] [op is] IIA, IIB or IIC T6, T5, T4 or T3 Gc

<b>Certificate</b>	IBExU 14 ATEX B002X
--------------------	---------------------

**Marking IECEx**

**Type A7-31\*\*-\* /\*\*\*\***

- Ex db dc eb ec ia ib ic [ic] nR nC ma mb mc [pxb] [pyb] [pzc] op is [op is] op pr q 60079-30-1 [60079-30-1] IIA, IIB or IIC T6, T5, T4 or T3 Gc
- Ex db dc eb ec ia ib ic [ib Gb] ma mb mc nR nC op is [op is] op pr [pxb] [pyb] q 60079-30-1 [60079-30-1] IIA, IIB, IIC T6, T5, T4 or T3 Gc
- Ex db dc eb ec ia ib ic [ia Ga] ma mb mc nR nC op is [op is Ga] op pr q 60079-30-1 IIA, IIB, IIC T6, T5, T4 or T3 Gc

**Type A7 -3S\*\*-\* /\*\*\*\***

- Ex tb tc ia ib ic [ic] ma mb mc op is [op is] op pr [pxb] [pyb] [pzc] IIIA, IIB or IIC, T80 °C, T100 °C or T130 °C Dc
- Ex tb tc ia ib ic [ib Gb] ma mb mc op is [op is] op pr [pxb] [pyb] IIIA, IIB or IIC, T80 °C, T100 °C or T130 °C Dc
- Ex tb tc ia ib ic [ia Ga] ma mb mc op is [op is] op pr IIIA, IIB or IIC, T80 °C, T100 °C or T130 °C Dc

**Type A7 -3n\*\*-\* /\*\*\*\***

- Ex ec nR [ic] [op is] IIA, IIB or IIC T6, T5, T4 or T3 Gc
- Ex ec nR [ib Gb] [op is] IIA, IIB or IIC T6, T5, T4 or T3 Gc
- Ex ec nR [ia Ga] [op is] IIA, IIB or IIC T6, T5, T4 or T3 Gc

<b>Certificate</b>	IECEx IBE 14.0028X
--------------------	--------------------

<b>Ambient temperature</b>	Dependent on installed components. Please pay attention to the information on the marking plate. -60 °C to max. +80 °C (-67 °F to max. +176 °F)
<b>Approved for zones</b>	2 and 22
<b>Other certification</b>	CSA 70010169
<b>Components</b>	The installation instructions and safety instructions of the component manufacturer must be observed.
<b>Co-applicable documents</b>	- Circuit diagram - Mounting instructions / Instruction manual of the enclosure and of the installed components - Delivery note
<b>Type of protection</b>	Max. IP 66 (EN 60529)
<b>Mechanical strength</b>	Impact energy: max. 7 J

For further informations and certificates, see [www.bartec.com](http://www.bartec.com)

**Electrical data**

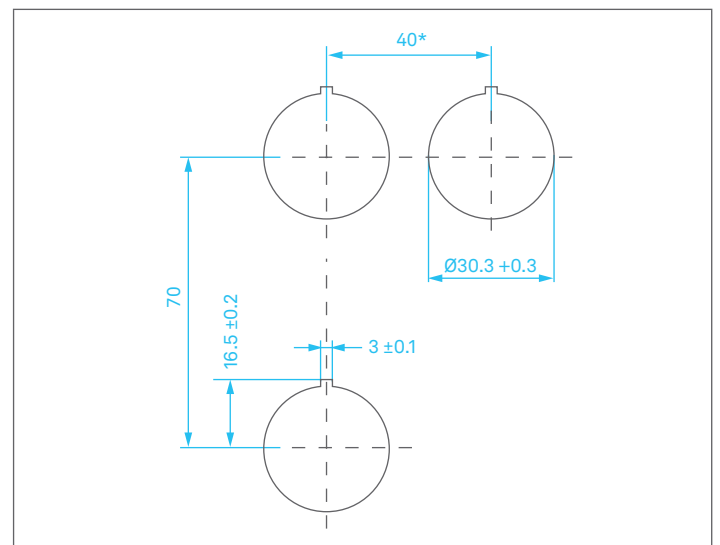
<b>Rated voltage</b>	up to 1000 V
<b>Rated current for components installed</b>	max. 690 A
<b>Rated cross section</b>	up to max. 400 mm <sup>2</sup>

Local measuring, control and switchgear combinations that are intended exclusively for use in areas with inflammable types of dust have the following deviating markings:  
Type A7-3S..-.... / ....

Control combinations that are built exclusively with type of protection Ex nR are marked as follows:  
Type A7-3n\*\*-\* /\*\*\*\*

**Mounting dimensions**

for switching and light elements according to EN 60947-5-1



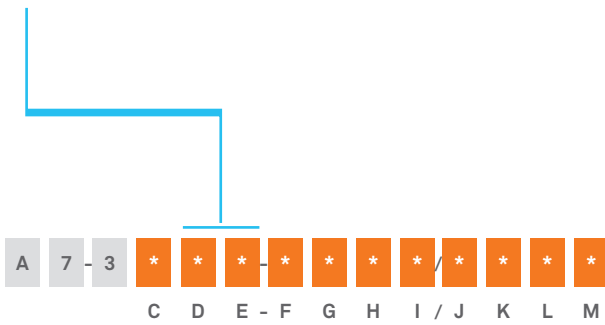
\* Recommended distance for mushroom pushbutton, emergency switch as well as position selector with protective shroud: 100 mm.

## Configuration data for control stations

### Enclosure type / material

DE	Type	Enclosure type	Ex protection	Material	Max. operating temperature
01	Empty enclosure	CA-...U	Ex e	Aluminum	-55 to +135 °C (Silikon)
02			Ex i		-35 to +85 °C (EPDM)
03	Empty enclosure	ESP,07-5185	Ex e	Polyester black	Silicone
05			Ex i		-55 °C to +100 °C
06		ESP,07-5184	Ex e	Polyester grey	EPDM
07			Ex i		-35 °C to +90 °C
09	Empty enclosure w. door	AX 920*	Ex e	Polyester, black	Rittal:
10			Ex i		-40 °C to +70 °C
90	Empty enclosure with lid	GWR	Ex e	Polyester, black	-50 °C to +100 °C
91	Empty enclosure with lid	ESA	Ex e	Aluminum	-60 °C to +180 °C (+160 °C with ceramic terminals)
32	Empty enclosure with flange and cover	ESI,07-56B1	Ex e	Stainless steel 316L - V4 A	Silicone:
33			Ex i		-40 °C to +100 °C
36	Empty enclosure with flange and hinged door	ESI,07-56D1	Ex e	Stainless steel 316L - V4 A	EPDM:
37			Ex i		-20 °C to +100 °C
92	Empty enclosure with flange and cover	TNCN	Ex e	Stainless steel 316L - V4 A	RAKU PUR:
93			Ex i		
94	Empty cabinet with flange and hinged door	TNCN	Ex e	Stainless steel 316L - V4 A	Silicone:
95			Ex i		
98	Empty enclosure with cover	ESX	Ex e	Stainless steel 316L - V4 A	-60 °C to +180 °C (+160 °C with ceramic terminals)
99	Empty enclosure with hinged door	ESX	Ex e	Stainless steel 316L - V4 A	

\*\* more Enclosures available on request



Character	Character for:	Variant:	Description
<b>C</b>	Design	1	Local control station & Distribution panel for gas and dust (zone 2/22)
		S	Local control station & Distribution panel for dust only (zone 22)
		n	Local control station & Distribution panel with restricted breathing protection
<b>FGHI</b>	Enclosure size code		Size code defined during engineering
<b>J</b>	Country identification	A, B, C, ...	Production location identification code
<b>KLM</b>	Sequence number starting with 001		